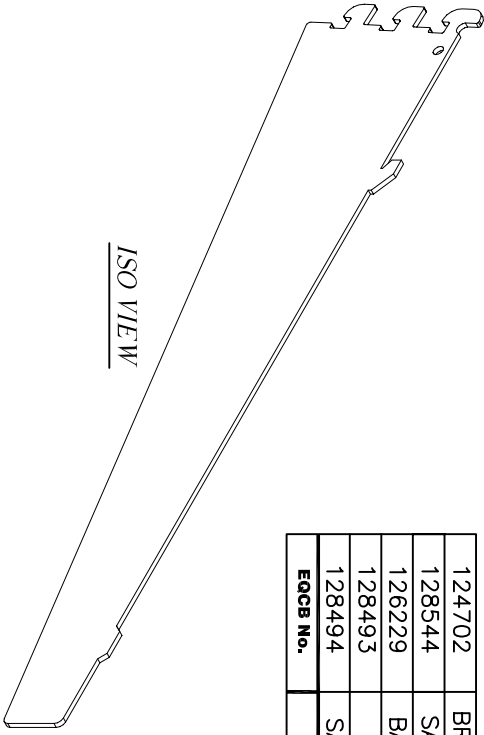
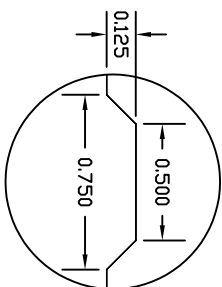
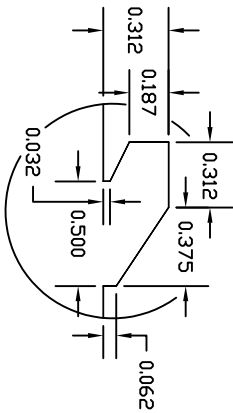


124702	BRONZE SHIMMER
128544	SATIN ZINC (DIE)
126229	BAVARIAN SILVER
128493	SATIN NICKEL
128494	SATIN STAINLESS
<b>EQCB No.</b>	<b>FINISH</b>



REVISIONS

REV.	DESCRIPTION	E.C.O. NO.	DATE	APPROVED
XX	XX	XX	XX	

NO DIMENSIONS OR TOLERANCES SPECIFIED IN THIS DRAWING SHALL BE CONSIDERED AS DIMENSIONS UNLESS OTHERWISE SPECIFIED. DIMENSIONS ARE IN INCHES UNLESS OTHERWISE SPECIFIED. DIMENSIONS ARE IN MILLIMETERS UNLESS OTHERWISE SPECIFIED. DIMENSIONS ARE IN MILLIMETERS UNLESS OTHERWISE SPECIFIED. DIMENSIONS ARE IN MILLIMETERS UNLESS OTHERWISE SPECIFIED.

2	RA29	0.092 X 3.500 X COIL CRS (DIE)	1
1	BUYOUT	13-GA X 48" X 120" CRS SHEET (LASER)	1
<b>ITEM</b>		<b>PART NO.</b>	<b>QTY.</b>
<b>BILL OF MATERIALS</b>			
UNLESS OTHERWISE SPECIFIED DIMENSIONS ARE IN INCHES TOLERANCES ARE:		CUSTOMER	
FRACTIONS: 1/32	DECIMALS: .005	ANGLES: ± 1/2	MERYVYN'S
± .005	± .01	± .01	APPROVALS
			J. AVILA
		DATE	08-28-06
		CHK'D.	
		AP'D.	
		EQCB NO.	
SEE CHART		SEE CHART	
DO NOT SCALE DRAWING			
TITLE		SCALE	
NS00066		N.T.S.	
PREEVEE STORE EQUIPMENT CO. Pico Rivera, CA. (562) 949-2535		SHEET: 1 OF 1	