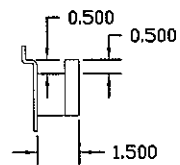
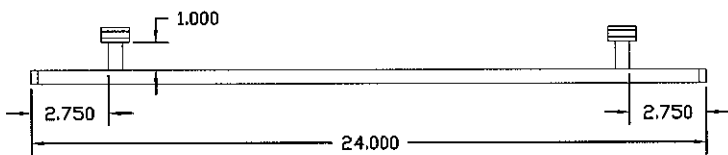
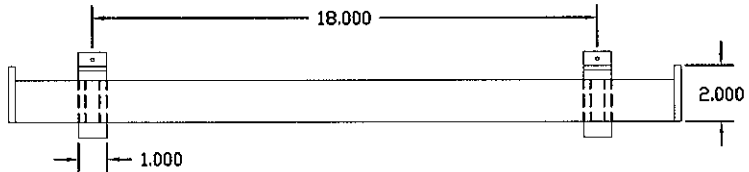
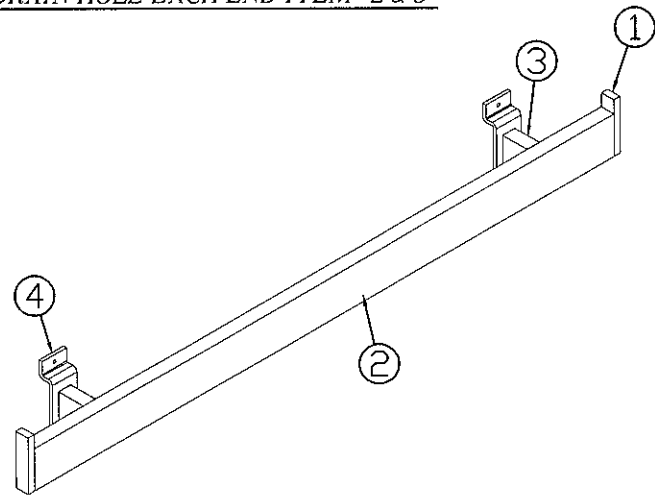


REVISIONS				
REV.	DESCRIPTION	E.C.O. NO.	DATE	APPROVED
XX	XX	XX	XX	



BLEND-IN, ALL WELDS FOR POLISHED CHROME
DRAIN HOLE EACH END ITEM #2 & 3



125103	CHROME
128704	SATIN NICKEL
EQCB No.	FINISH

ITEM	PART NO.	DESCRIPTION	QTY.
4	C99-W/O	1" S/W PLATE W/O DIMPLE	1
3	R197	16-GA. X 1/2" X 1-1/2" TUBE	2
2	R197	16-GA. X 1/2" X 1-1/2" TUBE	1
1	C227-2-CAP	1/4" X 1/2" X 2" STEEL END CAP	2

BILL OF MATERIALS

UNLESS OTHERWISE SPECIFIED DIMENSIONS ARE IN INCHES TOLERANCES ARE:		CUSTOMER MERVYN'S		 Pico Rivera, CA. (562) 949-2535	
FRACTIONS: ± 1/32	DECIMALS: .XX ±.01 .XXX ±.005	ANGLES: ± 1/2°	APPROVALS DRAWN J. AVILA		
FINISH SEE CHART			CHKD.	APVD.	TITLE NS007I
DO NOT SCALE DRAWING			EQCB NO. SEE CHART		SIZE DWG. NO. B 55001109
			SCALE N.T.S.		REV. SHEET: 1 OF 1

THIS DRAWING IS THE EXCLUSIVE PROPERTY OF REEVE STORE EQUIPMENT CO. WHO HOLDS AND MAINTAINS FULL COPYRIGHT PROTECTION THEREON. NO PART OF THIS DRAWING OR ANY INFORMATION CONTAINED HEREIN IS TO BE REPRODUCED, TRANSMITTED, OR IN ANY MANNER DISCLOSED TO ANY OTHER PARTY WITHOUT THE EXPRESS WRITTEN CONSENT OF REEVE STORE EQUIPMENT CO. COPYRIGHT © 2004, 2005, 2006, 2007, 2008, 2009, 2010, 2011, 2012, 2013, 2014, 2015, 2016, 2017, 2018, 2019, 2020, 2021, 2022, 2023, 2024, 2025. ALL RIGHTS RESERVED.